

*Peg placed at all new corners, unless otherwise stated.*

*See Sheet 7 for Reference Marks, Permanent Marks & MGA Coordinates Tables.*

*See Sheet 7 for Reinstatement Report.*

*Additional reference marks to be placed following road construction. (see IS319474).*

SAUNDERS HAVILL GROUP  
SAUNDERS HAVILL GROUP PTY LTD (ACN 144 972 949) hereby certify that the land comprised in this plan was surveyed by the corporation, by Nathan Glenn CHETTLEBURGH, surveying graduate, for whose work the corporation accepts responsibility, under the supervision of Simon Gerard BAKER, cadastral surveyor, and that the plan is accurate, that the said survey was performed in accordance with the Survey and Mapping Infrastructure Act 2003 and Surveyors Act 2003 and associated Regulations and Standards and that the said survey was completed on 29/03/2023



*[Signature]*  
Authorised Signatory

*[Signature]*  
Authorised Signatory

Date: 13/04/2023

**Plan of Lots 1-49 & 900 and Easements A-E in Lots 19, 20, 23, 28 & 29 respectively**

Cancelling Lot 3 on SPI86470

LOCAL GOVERNMENT: BRISBANE CITY LOCALITY: CALAMVALE

Meridian: MGA (Zone 56) by CORS

Survey Records: No

Scale: 1:1000

Format: STANDARD

**SP331516**

**WARNING : Folded or Mutilated Plans will not be accepted.**  
**Plans may be rolled.**  
**Information may not be placed in the outer margins.**

**722586114**

EL 400 \$6,534.75  
03/07/2023 11:45:12

(Dealing No.)

4. Lodged by

(Include address, phone number, email, reference, and Lodger Code)

I. Existing		Created		
Title Reference	Description	New Lots	Road	Secondary Interests
50600111	Lot 3 on SP186470	1-49 & 900	New Rd	Emts A-E

**6. Building Format Plans only.**

I certify that :

- \* As far as it is practical to determine, no part of the building shown on this plan encroaches onto adjoining lots or road;
- \* Part of the building shown on this plan encroaches onto adjoining \* lots and road

Cadastral Surveyor/Director\* Date

\*delete words not required

**7. Lodgement Fees :**

Survey Deposit	\$ .....
Lodgement	\$ .....
.....New Titles	\$ .....
Photocopy	\$ .....
Postage	\$ .....
TOTAL	\$ .....

8. Insert Plan Number

**SP331516**

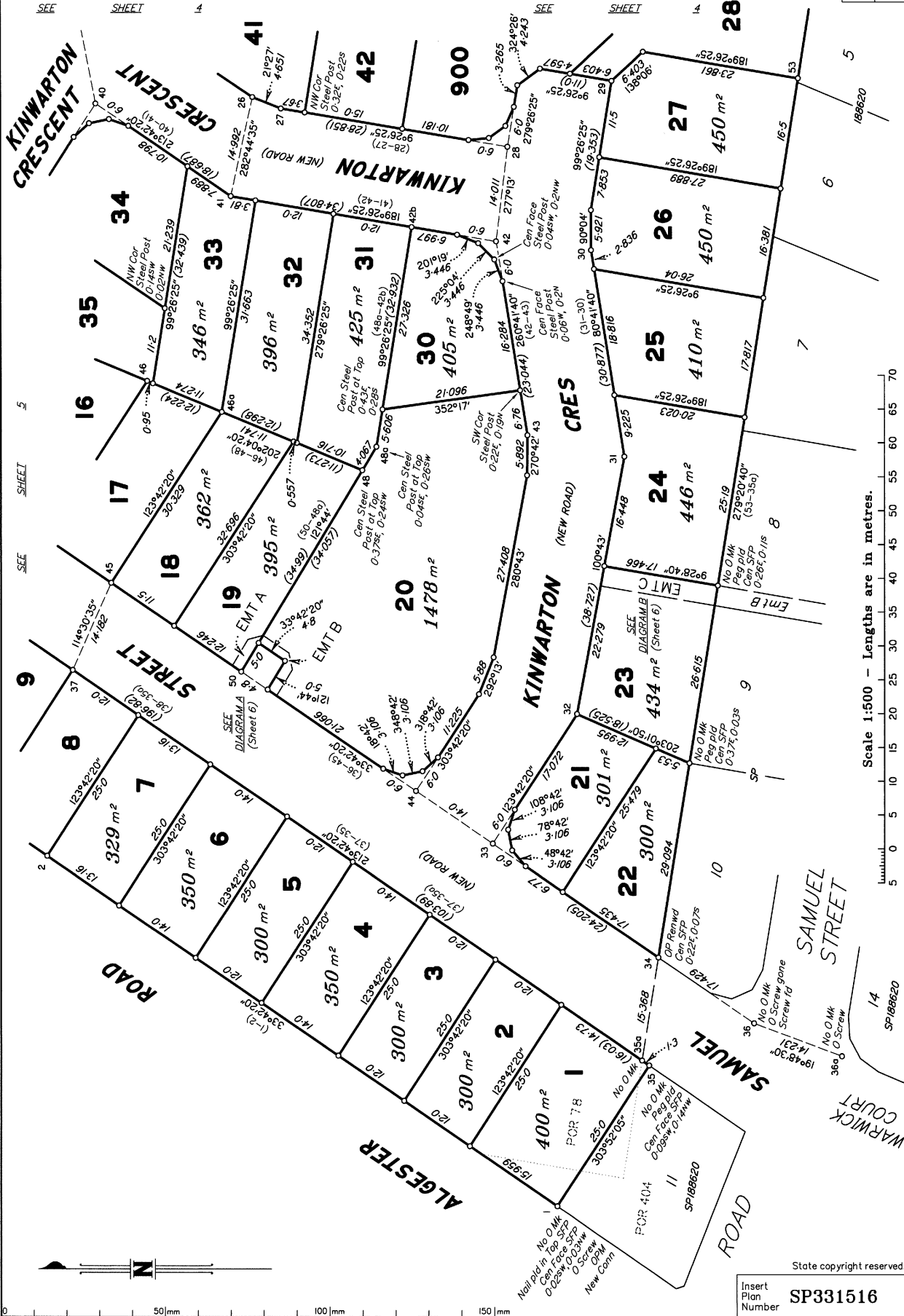
I	Pors 78 & 404
2-49 & 900	Por 78
Lots	Orig

2. Orig Grant Allocation :

3. References :  
Dept File :  
Local Govt :  
Surveyor : 10965

5. Passed & Endorsed :

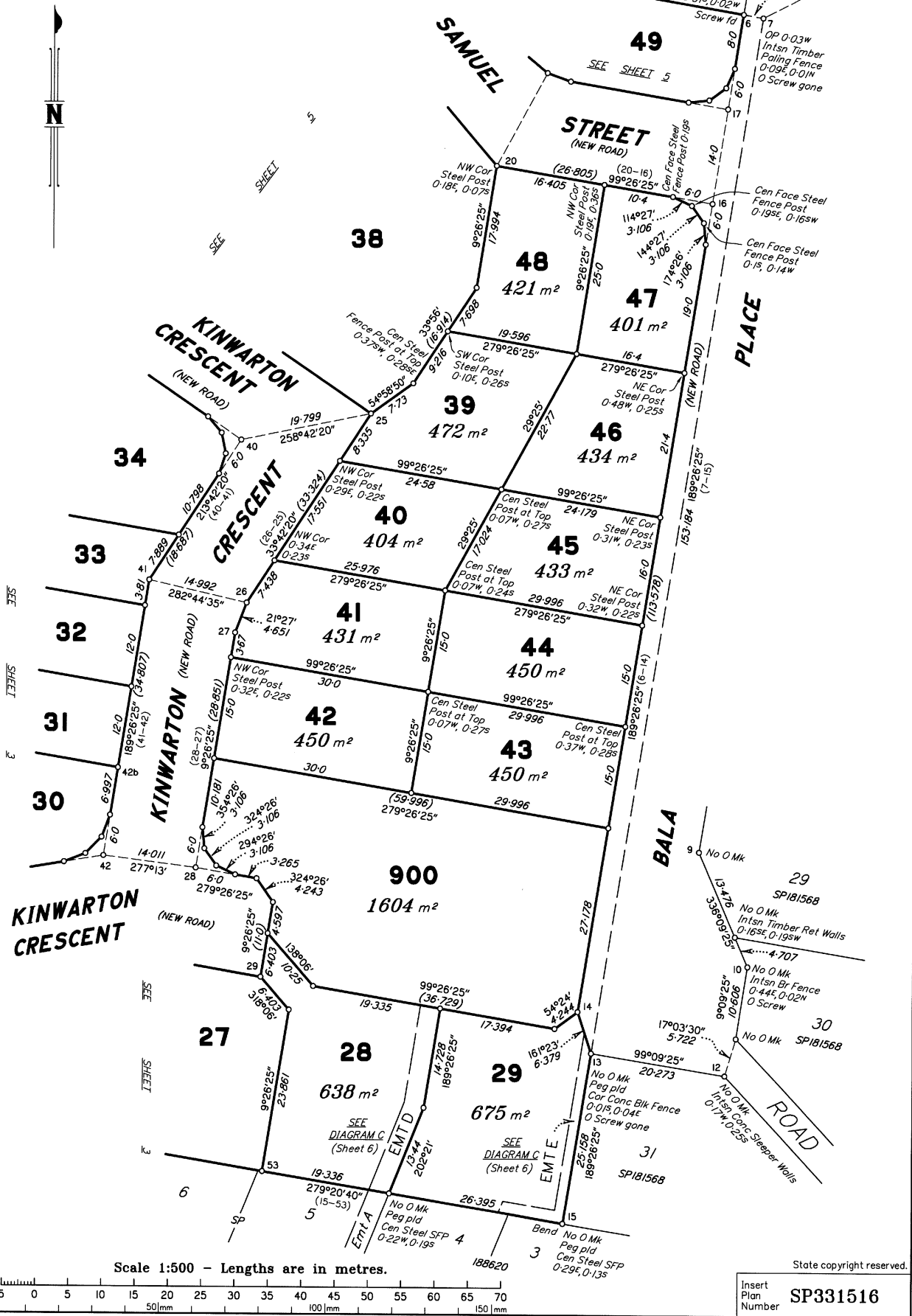
By : SAUNDERS HAVILL GROUP PTY LTD  
Date : 13/04/2023  
Signed : *KW*  
Designation : Endorsing Officer



Scale 1:500 - Lengths are in metres.

State copyright reserved.

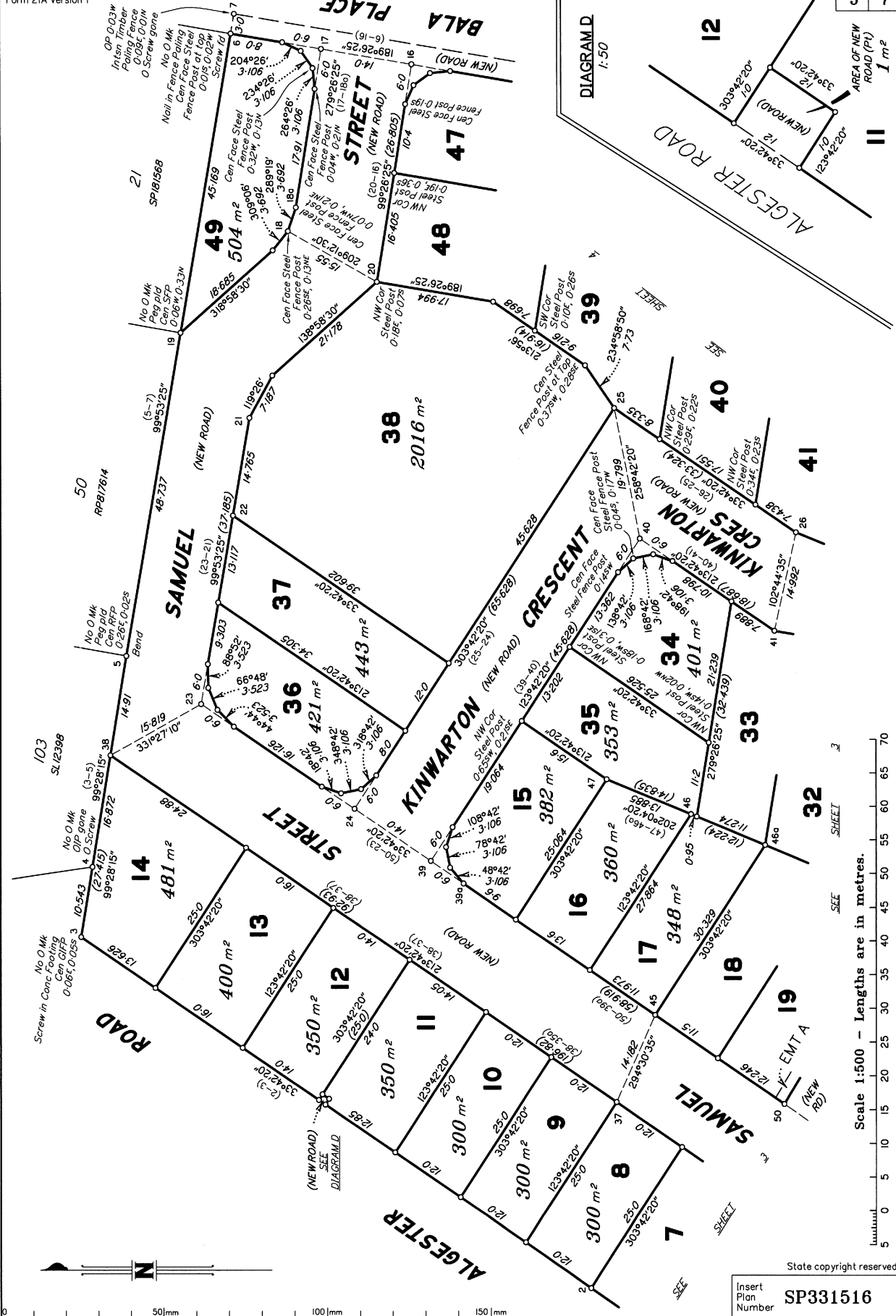
Insert Plan Number SP331516



Scale 1:500 - Lengths are in metres.

State copyright reserved.

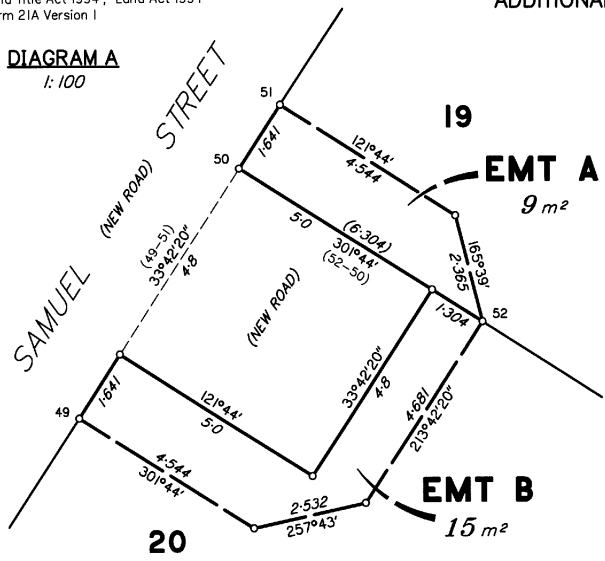
Insert Plan Number SP331516



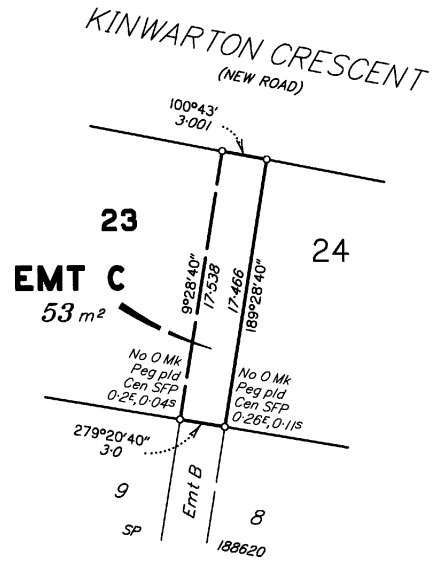
50mm 100mm 150mm

State copyright reserved.  
Insert Plan Number SP331516

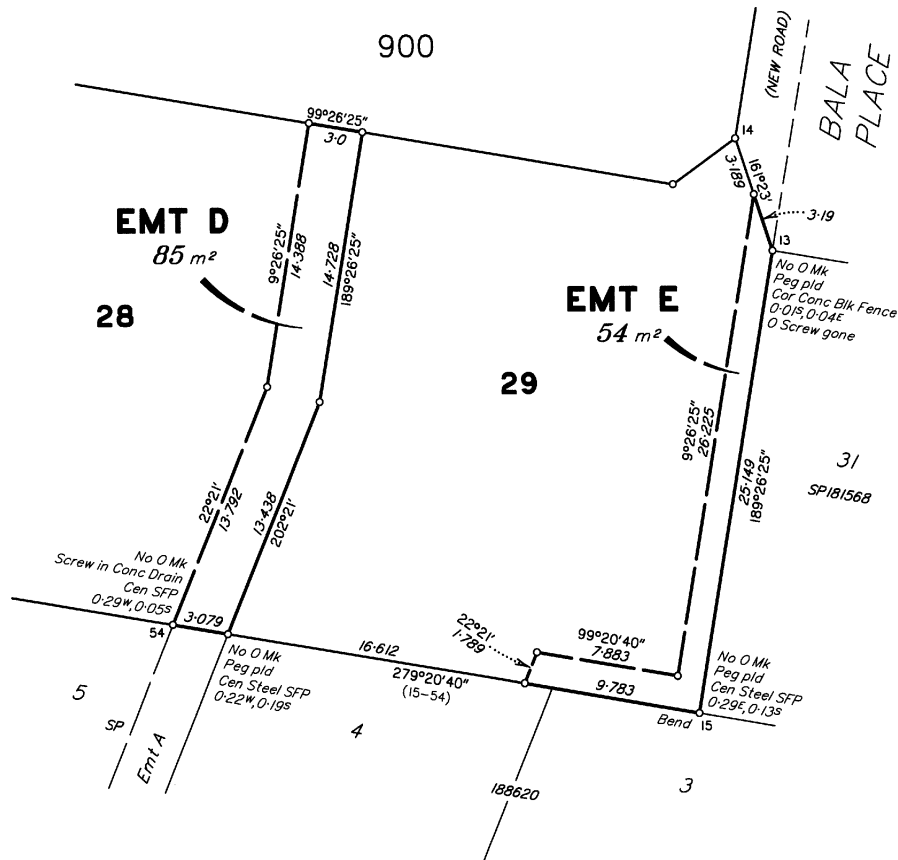
**DIAGRAM A**  
1:100



**DIAGRAM B**  
1:300



**DIAGRAM C**  
1:250



State copyright reserved.

Insert Plan Number **SP331516**



M.G.A. COORDINATES (GDA-2020)

STATION	EASTING	NORTHING	ZONE	P.U.	LINEAGE	METHOD	REMARKS
OPM 59879	504 024-022	6 945 875-320	56	0-017	Datum	SCDB	
6a	504 364-121	6 946 011-845	56	0-049	Derived	Network RTK	Screw in Kerb

Adjustment - QLD ANJ21.04 (April-2021)

PERMANENT MARKS

PM	ORIGIN	BEARING	DIST	NO	TYPE
I-OPM (New Conn)	SP304206	276°03'40"	89-727	59879	Standard
II-OPM	IS267875	42°39'45"	9-746	164681	Mini Mark

REFERENCE MARKS

STN	TO	ORIGIN	BEARING	DIST
1	Screw in Conc		5°43'30"	8-523
1	O Screw in Kerb	SP186470	240°14'45"	11-898
3	Screw in Conc		329°54'30"	13-308
4	OIP gone	RP217764	279°28'15"	0-96
4	O Screw in Kerb	RP217764	287°05'45"	22-517
5	Screw in Kerb		250°52'	6-702
6	Screw fd in Kerb		37°20'30"	12-264
6a	Screw in Kerb			at Station
7	O Screw gone	SP181568	188°00'10"	43-193
8	O Screw in Kerb	SP181568	8°56'25"	1-623
10	O Screw in Kerb	SP181568	296°26'25"	6-296
11	Screw in Kerb		232°0'	9-81
11	Screw fd in Conc		285°23'	11-99
11	O Nail hole gone	IS267875	44°25'45"	15-032
12	Screw in Gully Trap		323°47'	8-075
13	O Screw gone	SP181568	37°00'25"	7-442
16	Screw in Kerb		184°27'35"	47-013
17	Pin		13°51'	2-015
17	Screw in Kerb		196°0'	1-971
20	Screw in Kerb		234°45'	5-538
22	Screw in Kerb		11°33'	6-07
23	Pin		29°24'	4-243
24	Screw in Kerb			at Station
25	Screw in Conc		211°44'	2-31
30	Screw in Conc		249°56'	10-106
30	Screw in Conc		68°58'30"	9-37
32	Screw in Gully Trap		23°49'	4-929
33	Screw in Kerb		310°07'	1-97
35	Screw in Gully Trap		167°40'	5-468
36	Screw fd in Kerb		127°28'	9-566
36	O Screw gone	SP188620	10°12'45"	10-117
36a	O Screw in Kerb	SP188620	71°25'45"	7-997
37	Screw in Kerb		137°40'	4-173
38	Pin		126°0'	3-178
39	Screw in Kerb		14°56'	1-728
40	Pin		141°05'	2-061
40	Screw in Kerb		17°44'	2-715
41	Screw in Gully Trap		154°53'	7-01
42	Screw in Kerb		143°43'	2-715
43	Screw in Kerb		212°03'	5-075
44	Pin		299°55'	1-625
44	Screw in Kerb		228°43'	1-889
55	O Screw in Kerb	RP217764	237°29'15"	4-02

Reinstatement Report

Search RP98389, RP142700, RP217764, RP817614, IS184146, SP181568, SP181296, SP186470, SP188620 and IS267875

Stations 1, 4, 8, 10, 11, 34, 36a and 55 fixed from original monuments.

Stations 7, 9, 12, 13 and 15 fixed by monuments and dimensions on SP181568.

Stations 1 - 35 - 35a - 11 fixed by monuments and dimensions on SP188620 except for the bend at station 15 which is measured 20mm west of that shown on SP188620.

Station 5 fixed by monuments and dimensions on RP217764.

Station 3 fixed by extending the line between stations 5 to 4 by 10.543. This generally agrees with the reinstatement on IS184146 and balance between original dimensions on RP68389 and RP142700.

Station 19 fixed by proportioning excess between stations 5 to 7 and dimensions on RP817614 and SP181568.

The coordinates for OPM59879 were validated by network RTK at the same time Station 6a was observed.

Additional reference marks to be placed following road construction (see IS319474).